

NATHANIEL A. SIEGEL
Licensed Real Estate Broker

NEW EXCLUSIVE: 235 WEST 108TH ST. APT #43 NYC, NY 10025
UPPER WESTSIDE/ MANHATTAN VALLEY
TWO BEDROOM

DESCRIPTION:

COOP
2 BEDROOM APARTMENT
LIVING ROOM (12'9" X 13'0")
SOUTH EXPOSURE
DINING ROOM (10'6" X 13'0")
SOUTH & WEST EXPOSURE
BEDROOM (8'9" X 14'2")
BEDROOM (8'9" X 8'0")
FULL BATH
WINDOWED KITCHEN
W/ DISHWASHER
WEST EXPOSURE
ENTRY HALL

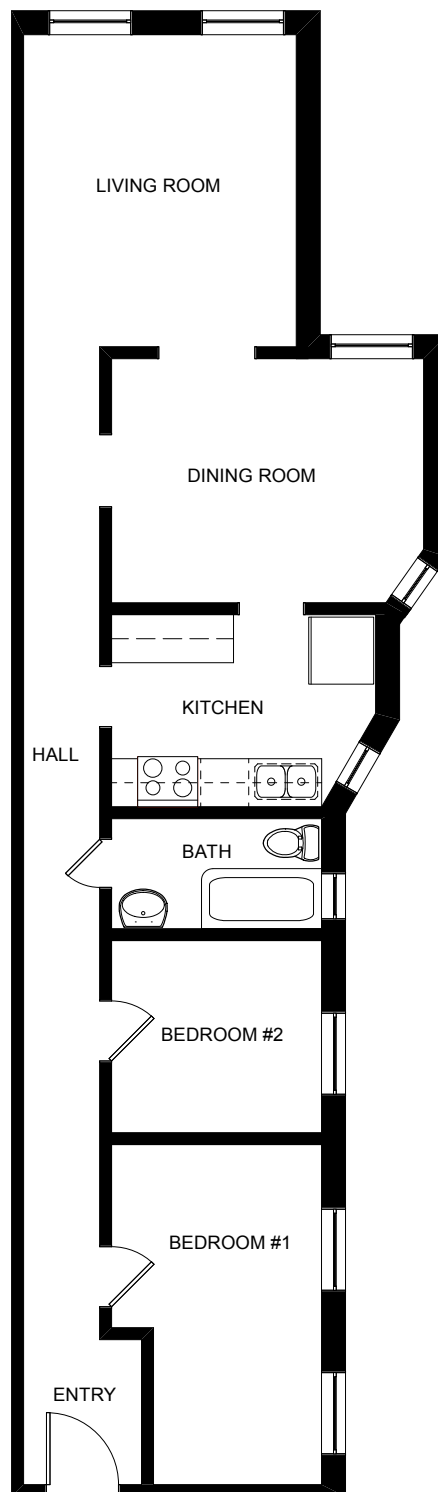
BUILDING INFO:

PREWAR COOP
ELEVATOR
6 STORIES
NON DOORMAN
LAUNDRY ROOM
BICYCLE ROOM
LIVE-IN SUPER
PETS W/ APPROVAL
37 UNITS
MANAGING AGENT
ROBERT E. HILL INC.

PRICE: \$ 620,000.00
MAINTENANCE: \$1,185.25
500 SHARES
80% FINANCING/ 42% TAX DEDUCTIBLE

SHOWN BY APPOINTMENT

CONTACT: NATHANIEL A. SIEGEL
CELL: 1 917 842-2983
EMAIL NATHANIELSIEGEL@NYC.RR.COM



All information regarding a property for sale, rental or financing is from sources deemed reliable. No representation is made as to the accuracy thereof, and such information is subject to errors, omission, change of price, rental commission, prior sale, lease or financing, or withdrawal without notice. All square footage and dimensions are approximate. Exact dimensions can be obtained by retaining the services of a professional architect or engineer. Beginning March 1, 2002, pursuant to Article 14 of the New York State Real Property Law, sellers of 1-4 family residences (excluding condominiums, cooperatives, and unimproved land) must provide buyers with detailed Disclosure Statements before entry into binding contracts.